



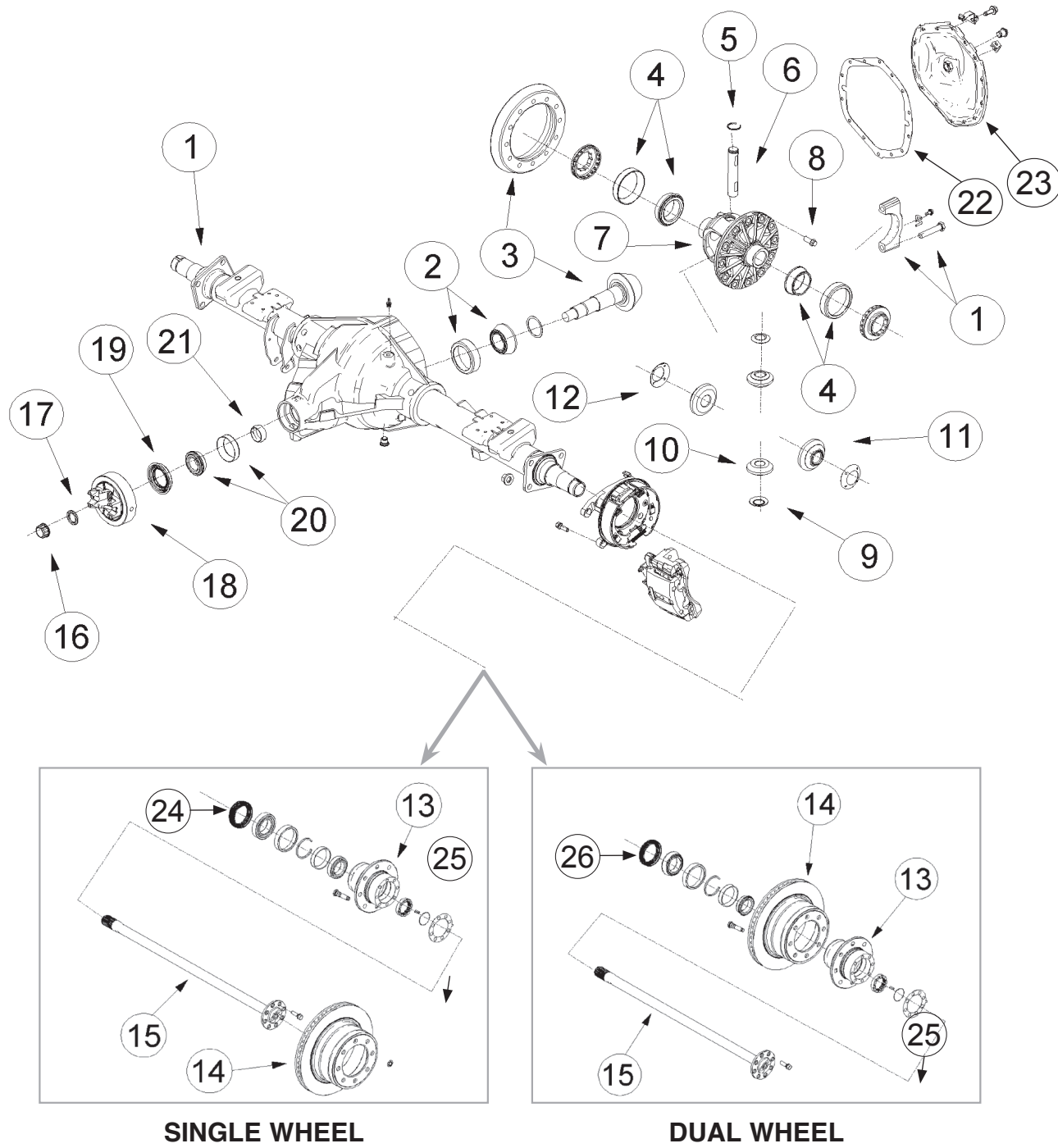
**Demand the original.**

Axle Components | Driveshaft Components | Repair Kits



**AAM 1150 14 BOLT**

**GM 11.5" REAR AXLE**



ILL #	AAM PART NUMBER	OE PART NUMBER	DESCRIPTION	REQ	USAGE	MODEL YEAR
1			AXLE HOUSING		FOR REFERENCE ONLY	
2	74004500	26064500	LARGE PINION BEARING ASM (CUP & CONE)	1	C;K;WCC	2001+
3	40101174		RING & PINION GEARSET (3.42 RATIO; 2 CUT)			
3	40088177		RING & PINION GEARSET (3.73 RATIO; 2 CUT)	1	C;K	2001+
3	40088195		RING & PINION GEARSET (4.10 RATIO; 2 CUT)	1	C;K	2001+
3	40030646		RING & PINION GEARSET (5.13 RATIO; 2 CUT)	1		
4	74004499	26064499	DIFF. CASE BEARING ASM (CUP & CONE)	1	C;K;WCC	2001+
5	AVAILABLE IN KIT ONLY		SNAP RING	1	C;K;WCC	2001+
6	AVAILABLE IN KIT ONLY		PINION SHAFT	1	C;K;WCC	2001+
7	40101021		DIFFERENTIAL OPEN CASE (WITHOUT INTERNALS)	1	C;K	2001+
7	40101020		DIFFERENTIAL OPEN CASE ASSEMBLY (WITH INTERNALS)	1	C;K	2001+
7	40099548		HELICAL LIMITED SLIP DIFF ASSEMBLY - TRACRITE GT (NOT PRODUCTION BUT WILL FIT GM AXLE)	1	C;K	2001+
8	40022812	26064505	RING GEAR BOLT W/ ADHESIVE	12	C;K;WCC	2001+
9	AVAILABLE IN KIT ONLY		PINION THRUST WASHER	2	C;K;WCC	2001+
10	AVAILABLE IN KIT ONLY		PINION GEAR	2	C;K;WCC	2001+
11	AVAILABLE IN KIT ONLY		SIDE GEAR	2	C;K;WCC	2001+
12	AVAILABLE IN KIT ONLY		SIDE THRUST WASHER	2	C;K;WCC	2001+
13			SINGLE/DUAL WHEEL HUB (WITHOUT INTERNALS)		FOR REFERENCE ONLY	
14			SINGLE/DUAL WHEEL HUB & ROTOR ASSEMBLY		FOR REFERENCE ONLY	
15	40042353	15898643	AXLE SHAFT (913 MM; 30 TOOTH; 8 BOLT; DUAL WHEEL; DISC; 2WD)	2	C;K;G	2008+
15	40051861	20920665	AXLE SHAFT (947 MM; 30 TOOTH; 8 BOLT; DUAL WHEEL DISC; 2WD & 4WD)	2	C;K	2010+
15	40051863	20920663	AXLE SHAFT (1023 MM; 30 TOOTH; 8 BOLT; DUAL WHEEL DISC; 2WD & 4WD)	2	C;K	2010+
15	40051859	20920662	AXLE SHAFT (932 MM; 30 TOOTH; 8 BOLT; DUAL WHEEL DISC; 2WD & 4WD)	2	C;K	2010+
15	40003201		AXLE SHAFT SW (913MM; 30 TOOTH; 8 BOLT) LH/RH	2	C;K	2000+
15	40003202		AXLE SHAFT DW (1019MM; 30 TOOTH; 8 BOLT) LH/RH	2	C;K	1999- 2002
15	40003204		AXLE SHAFT DW (918MM; 30 TOOTH; 8 BOLT) LH/RH	2	C;K	1999- 2002
16	74003027	12471484	PINION NUT	1	C;K;WCC	2001+
17	40003255	12471485	PINION NUT WASHER	1	C;K;WCC	2001+
18	40082168	22754165	PINION YOKE (1485 U-JOINT; 4 FOOTED)	1	C;K	2011+
18	26060884		PINION YOKE - REGULAR WITHOUT DAMPER 1415			
19	74004030	26064030	TRIPLE LIP PINION SEAL	1	C;K;WCC	2001+
20	74008356	9418356	SMALL PINION BEARING ASM (CUP & CONE)	1	C;K;WCC	2001+
21	74001051	12471647	COLLAPSIBLE SPACER	1	C;K;WCC	2001+

**VEHICLE REFERENCE GUIDE**

- C TRUCK - 2-WHEEL DRIVE FULL-SIZE TRUCK & UTILITY
- K TRUCK - 4-WHEEL DRIVE FULL-SIZE TRUCK & UTILITY
- G FULL-SIZE VAN (ALSO GMT-600), EXPRESS/SAVANA
- WCC WORKHORSE CUSTOM CHASSIS



**Demand the original.**

Axle Components | Driveshaft Components | Repair Kits



**AAM 1150 14 BOLT**

**GM 11.5" REAR AXLE**

ILL #	AAM PART NUMBER	OE PART NUMBER	DESCRIPTION	REQ	USAGE	MODEL YEAR
22	40001357	12471447	RUBBER OVER METAL COVERPAN GASKET	1	C;K	2001+
23	40087967	20984339	COVERPAN	1	C;K	2001+
24	15823962	15823962	HUB SEAL	2	C;K	2001+
25	40000014	12473128	HUB GASKET	2	C;K	2001+
25	40051851	20920620	HUB GASKET - SINGLE & DUAL	2	C;K	2011+
26	15823962	15823962	HUB SEAL	2	C;K	2001+
26	20889025	20889025	HUB SEAL	2	C;K	2011+

**74010015 11.5" REAR 14 BOLT - MASTER INSTALL KIT**  
Sierra, Silverado  
MODEL YEAR 2001 to 2010

AAM PART #	O.E. PART #	DESCRIPTION	QTY
40003251		FILL PLUG ASM	1
40001357	12471447	RUBBER OVER METAL COVERPAN GASKET	1
40000014	12473128	HUB GASKET	2
40011051	12471647	COLLAPSIBLE SPACER	1
74004505	26064505	RING GEAR BOLT W/ ADHESIVE	12
40003027	12471484	PINION NUT	1
74004030	26064030	TRIPLE LIP PINION SEAL	1
40023476		WHEEL BOLT W/ ADHESIVE	16
40003255		PINION NUT WASHER	1
74003244	14042602	FILL/DRAIN PLUG WASHER	1
	26060977	PINION SEAL SLEEVE	1
	476753	FILL PLUG	1
40002169		COVERPAN BOLT W/ ADHESIVE	14
		PINION SHIM	18

**74010016 11.5" REAR 14 BOLT - MASTER INSTALL KIT**  
Sierra, Silverado  
MODEL YEAR 2011 to Current

AAM PART #	O.E. PART #	DESCRIPTION	QTY
	26060977	PINION SEAL SLEEVE	1
40005967		RUBBER OVER METAL COVERPAN GASKET	1
40001357	12471447	RUBBER OVER METAL COVERPAN GASKET	1
		PINION SHIM	18
40022812	26064505	RING GEAR BOLT W/ ADHESIVE	14
40023476		WHEEL BOLT W/ ADHESIVE	16
40042937		FILL/DRAIN PLUG	1
40007601		MAGNETIC FILL/DRAIN PLUG	1
40051851	20920620	HUB GASKET - SINGLE & DUAL	4
40011051	12471647	COLLAPSIBLE SPACER	2
40041239		SPECIAL COVERPAN BOLT	2
40020764		HEX BOLT W/ ADHESIVE	16
40003027	12471484	PINION NUT	1
74004030	26064030	TRIPLE LIP PINION SEAL	2
40003255	12471485	PINION NUT WASHER	1
40002169		COVERPAN BOLT W/ ADHESIVE	14

**74067018 11.5" REAR 14 BOLT - MASTER BEARING KIT**  
Sierra, Silverado  
MODEL YEAR 2011 to Current

AAM PART #	O.E. PART #	DESCRIPTION	QTY
40016979		DIFFERENTIAL BEARING ASM (CUP & CONE)	2
40003027		PINION NUT	1
40003255		PINION NUT WASHER	1
40011051		COLLAPSIBLE SPACER	1
40090049		PINION TAIL BEARING ROLLER	1
40090051		PINION TAIL TAPERED RACE	1
09418357		ROLLER ASM, BRG	1
26064030		PINION SEAL	1
09418358		PINION TAIL BEARING RACE	1

**74045615 11.5" REAR 14 BOLT - 30 TOOTH - DIFFERENTIAL GEAR KIT**  
Sierra, Silverado  
MODEL YEAR 2001 to 2006

AAM PART #	O.E. PART #	DESCRIPTION	QTY
		PINION GEAR	2
		SIDE THRUST WASHER	2
		SIDE GEAR	2
		PINION SHAFT	1
		PINION THRUST WASHER	2
		SNAP RING	1

\*Note: 46mm Side Gear Hub

**74046293 11.5" REAR 14 BOLT - 30 TOOTH - DIFFERENTIAL GEAR KIT**  
Sierra, Silverado  
MODEL YEAR 2007 to 2010

AAM PART #	O.E. PART #	DESCRIPTION	QTY
		PINION GEAR	2
		SIDE THRUST WASHER	2
		SIDE GEAR	2
		PINION SHAFT	1
		PINION THRUST WASHER	2
		SNAP RING	1

\*Note: 52mm Side Gear Hub

**74067011 11.5" REAR 14 BOLT - MASTER BEARING KIT**  
Sierra, Silverado  
MODEL YEAR 2001 to 2010

AAM PART #	O.E. PART #	DESCRIPTION	QTY
	26064500	PINION HEAD BEARING ASM (CUP & CONE)	1
	9418357	PINION TAIL BEARING ROLLER	1
	9418358	PINION TAIL BEARING RACE	1
	26064030	PINION SEAL	1
74003027	40003027	PINION NUT	1
74003244	40003255	PINION NUT WASHER	1
74001051	40011051	COLLAPSIBLE SPACER	1
74004499	40016979	DIFFERENTIAL BEARING ASM (CUP & CONE)	2

**74020013 11.5" REAR 14 BOLT - PINION SEAL KIT**  
Sierra, Silverado  
MODEL YEAR 2001 to Current

AAM PART #	O.E. PART #	DESCRIPTION	QTY
74004030	26064030	TRIPLE LIP PINION SEAL	1
40003255	12471485	PINION NUT WASHER	1
40011051	12471647	COLLAPSIBLE SPACER	1
40003027	12471484	PINION NUT	1
26060977		PINION SEAL SLEEVE	1

**74030018 11.5" REAR 14 BOLT - COVERPAN KIT**  
Sierra, Silverado  
MODEL YEAR 2001 to Current

AAM PART #	O.E. PART #	DESCRIPTION	QTY
40087967	20984339	COVERPAN	1
40001357	12471447	RUBBER OVER METAL COVERPAN GASKET	1
40041239		SPECIAL COVERPAN BOLT	2
40002169		COVERPAN BOLT W/ ADHESIVE	14
40042937		FILL/DRAIN PLUG	1



# Demand the original.

Axle Components | Driveshaft Components | Repair Kits



## *AAM 1150 14 BOLT*

## *GM 11.5" REAR AXLE*

### 74070001 11.5" REAR SINGLE WHEEL - WHEEL END KIT

Savana, Express, Sierra, Silverado  
MODEL YEAR 2001 to Current

AAM PART #	O.E. PART #	DESCRIPTION	QTY
9428909		OUTER WHEEL END BEARING	1
9428539		OUTER WHEEL END RACE	1
9436882		INNER WHEEL END BEARING	1
142223		INNER WHEEL END RACE	1
15823962		HUB SEAL	2
40012104		WHEEL BOLT W/ ADHESIVE	16
341509		HUB NUT	2
40036934		HUB NUT LOCK	2
15702309		RETAINING RING - OUTER BEARING	2
341511		RETAINING RING - HUB	2
40000014		HUB GASKET	2

### 74070003 11.5" REAR SINGLE WHEEL - WHEEL END KIT

Sierra, Silverado  
MODEL YEAR 2011 to Current

AAM PART #	O.E. PART #	DESCRIPTION	QTY
40059216		INNER WHEEL END RACE	1
40059217		INNER WHEEL END BEARING	1
40059215		OUTER WHEEL END BEARING	1
40059214		OUTER WHEEL END RACE	1
20889025		HUB SEAL	2
25855293		RETAINING RING - OUTER BEARING	4
40023476		WHEEL BOLT W/ ADHESIVE	16
40051851		HUB GASKET - SINGLE & DUAL	2
40082234		HUB NUT LOCK	2
40091019		HUB NUT	2
40096297		HUB NUT SNAP RING	2

### 74070002 11.5" REAR DUAL WHEEL - WHEEL END KIT

Sierra, Silverado  
MODEL YEAR 2001 to 2010

AAM PART #	O.E. PART #	DESCRIPTION	QTY
40005768		INNER WHEEL END RACE	1
40005767		INNER WHEEL END BEARING	1
40005772		OUTER WHEEL END BEARING	1
40005773		OUTER WHEEL END RACE	1
15823962		HUB SEAL	2
15702309		RETAINING RING - OUTER BEARING	4
40012104		WHEEL BOLT W/ ADHESIVE	16
40000014		HUB GASKET	2
40036934		HUB NUT LOCK	2
341509		HUB NUT	2
341511		RETAINING RING - HUB	2

### 74070004 11.5" REAR DUAL WHEEL - WHEEL END KIT

Sierra, Silverado  
MODEL YEAR 2011 to Current

AAM PART #	O.E. PART #	DESCRIPTION	QTY
40059214		OUTER WHEEL END RACE	1
40059215		OUTER WHEEL END BEARING	1
40059217		INNER WHEEL END BEARING	1
40059216		INNER WHEEL END RACE	1
40051851		HUB GASKET - SINGLE & DUAL	2
20889025		HUB SEAL	2
40082234		HUB NUT LOCK	2
15012506		ROTOR BOLT W/ WASHER & ADHESIVE	16
40096297		HUB NUT SNAP RING	2
40091019		HUB NUT	2
40023476		WHEEL BOLT W/ ADHESIVE	16

# Notes

---

---

---

---

---

---

---

---

---

---

---

---

---

---

---

---

---

---

---

---

---

---

---

---

---

---

---

---

---

---

---