



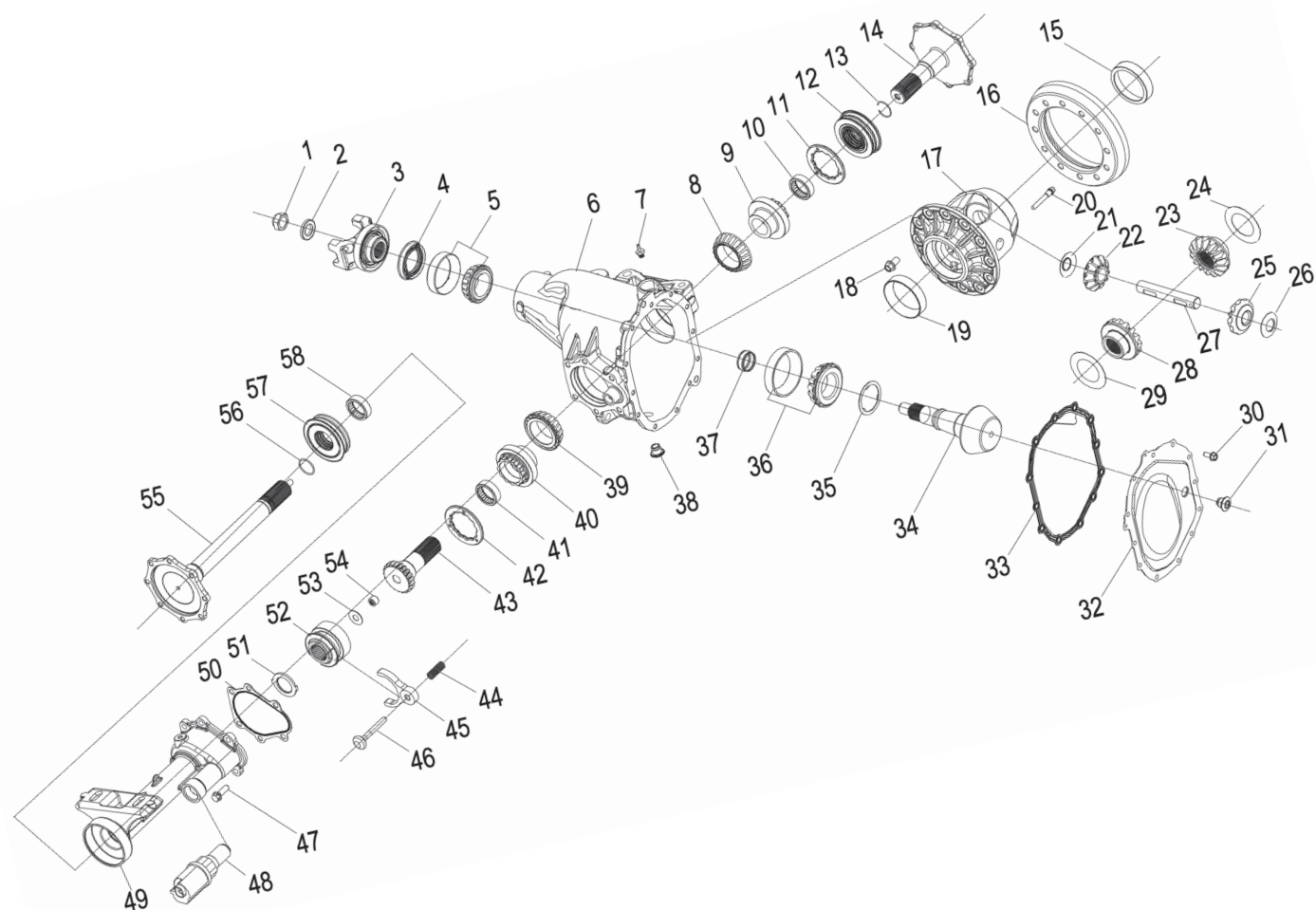
# Demand the original.

Axle Components | Driveshaft Components | Repair Kits



## AAM 925 IFS SALISBURY

## GM 9.25" FRONT AXLE



ILL #	AAM PART NUMBER	OE PART NUMBER	DESCRIPTION	REQ	USAGE	MODEL YEAR
1	74003762	9783762	PREVAILING TORQUE PINION NUT	1		
2	74007900	517900	PINION NUT WASHER	1		
3	40025925	88967027	PINION YOKE (1344 UJT 4 FOOTED)	1		
4	40007712	12471590	PINION SEAL	1		
5	74007781	9417781	SMALL PINION BEARING ASM (CUP & CONE)	1		
6			CARRIER HOUSING			
14	40058311		OUTPUT SHAFT LH	1	GMT 900	2011+
17	40058275		DIFFERENTIAL OPEN CASE (WITHOUT INTERNALS)	1	GMT 900	2011+
17	40058274		DIFFERENTIAL OPEN CASE ASSEMBLY (WITH INTERNALS)	1	GMT 900	2011+
18	74002703	14012703	RING GEAR BOLT W/ ADHESIVE	12		
20	AVAILABLE IN KIT ONLY		PINION SHAFT LOCK SCREW	1		
27	AVAILABLE IN KIT ONLY		SIDE GEAR	1		
36	40051147	20768576	LARGE PINION BEARING (CUP & CONE)	1		
37	74002691	14012691	COLLAPSIBLE SPACER	1		
43	40058285	20768560	IO SHAFT	1	GMT 900	2011+
55	40058310		OUTPUT SHAFT ASSEMBLY WITH SNAP RING LH	1	GMT 900	2011+
55	40058313		OUTPUT SHAFT RH	1	GMT 900	2011+
58	7401873	15521873	ROLLER BEARING ASM	2		
10 41	7401873	15521873	ROLLER BEARING ASM	1		
12 57	40058298	20768559	OUTPUT SEAL	2		
13 56	40040610	25931953	SNAP RING	2		
16 34	26060068		RING & PINION GEARSET (3.42 RATIO; 2 CUT)	1	GMT 900	2011+
16 34	40058536		RING & PINION GEARSET (3.73 RATIO; 2 CUT)	1	GMT 900	2011+
16 34	40072307		RING & PINION GEARSET (4.10 RATIO; 2 CUT)	1	GMT 900	2011+
16 34	26060058		RING & PINION GEARSET (4.56 RATIO; 2 CUT)	1	GMT 900	2011+
21 26	AVAILABLE IN KIT ONLY		SIDE GEAR	2		
22 25	AVAILABLE IN KIT ONLY		SIDE GEAR	2		
24 29	AVAILABLE IN KIT ONLY		SIDE GEAR	2		
28 23	AVAILABLE IN KIT ONLY		SIDE GEAR	2		
8 15 19 39	74005123	11505123	DIFF. CASE BEARING ASM (CUP & CONE)	2		
	AVAILABLE IN KIT ONLY		SIDE GEAR	2		
	AVAILABLE IN KIT ONLY		SIDE GEAR SPACER	2		

### VEHICLE REFERENCE GUIDE

- C TRUCK - 2-WHEEL DRIVE FULL-SIZE TRUCK & UTILITY
- K TRUCK - 4-WHEEL DRIVE FULL-SIZE TRUCK & UTILITY



**Demand the original.**

Axle Components | Driveshaft Components | Repair Kits



**AAM 925 IFS SALISBURY**

**74010010 9.25" FRONT SALISBURY - MASTER INSTALL KIT**  
Sierra, Silverado 2500/3500  
MODEL YEAR 2010 to Current

AAM PART #	O.E. PART #	DESCRIPTION	QTY
40007712	12471590	PINION SEAL	1
74007900	517900	PINION NUT WASHER	1
	26036835	TUBE BOLT W/ WASHER & ADHESIVE	6
40058296		RUBBER OVER METAL COVERPAN GASKET	1
40058298		OUTPUT SEAL	2
74002703	14012703	RING GEAR BOLT W/ ADHESIVE	12
40051849		THRUST WASHER	1
		PINION SHIM	18
40039752		FILL PLUG	2
		OUTPUT SHIM	20
40002169		COVERPAN BOLT W/ ADHESIVE	12
40058278		LOCK RING	2
7401873	15521873	ROLLER BEARING ASM	3
	26041516	ROLLER BEARING ASM I/O	1
74003762	9783762	PREVAILING TORQUE PINION NUT	1
74002691	14012691	COLLAPSIBLE SPACER	1
40058297		TUBE GASKET	1
46002040		VENT CONNECTOR	1
40040610		SNAP RING	2

**74067005 9.25" FRONT SALISBURY - MASTER BEARING KIT**  
Silverado, Sierra, Yukon XL, Suburban, Avalanche  
MODEL YEAR 1988 to 2011

AAM PART #	O.E. PART #	DESCRIPTION	QTY
	454459	PINION HEAD BEARING ROLLER	1
	457258	PINION HEAD BEARING RACE	1
	9417782	PINION TAIL BEARING ROLLER	1
	9417783	PINION TAIL BEARING RACE	1
74003762	9783762	PREVAILING TORQUE PINION NUT	1
74007900	517900	PINION NUT WASHER	1
74002691	14012691	COLLAPSIBLE SPACER	1
	11505124	DIFF BEARING ROLLER	2
	11505125	DIFF BEARING RACE	2
	26064029	PINION SEAL	1

\*Note: GM 9.25" IFS use Pinion Seal 40007712 - order separately

**GM 9.25" FRONT AXLE**

**74020008 9.25" FRONT SALISBURY - PINION SEAL KIT**  
Sierra, Silverado, Suburban, Yukon XL, Avalanche, H2  
MODEL YEAR 1999 to Current

AAM PART #	O.E. PART #	DESCRIPTION	QTY
40007712	12471590	PINION SEAL	1
74002691	14012691	COLLAPSIBLE SPACER	1
74003762	9783762	PREVAILING TORQUE PINION NUT	1
74007900	517900	PINION NUT WASHER	1

**74050006 9.25" FRONT SALISBURY - OUTPUT SHAFT SEAL KIT**  
Sierra, Silverado  
MODEL YEAR 1997 to Current

AAM PART #	O.E. PART #	DESCRIPTION	QTY
40058298	20768559	OUTPUT SEAL	2
40051849		THRUST WASHER	1
	26031703	SNAP RING	2
7401873	15521873	ROLLER BEARING ASM	3
40058297		TUBE GASKET	1
	26036835	TUBE BOLT W/ WASHER & ADHESIVE	6
	26041516	ROLLER BEARING ASM I/O	1
40040610		SNAP RING	1

**74030008 9.25" FRONT SALISBURY - COVERPAN KIT**  
Sierra, Silverado  
MODEL YEAR 2010 to Current

AAM PART #	O.E. PART #	DESCRIPTION	QTY
40058288		COVERPAN	1
40058296		RUBBER OVER METAL COVERPAN GASKET	1
40002169		COVERPAN BOLT W/ ADHESIVE	12
40039752		FILL PLUG	1

**74080009 9.25" FRONT SALISBURY - DISCONNECT SHIFTER KIT**  
Sierra, Silverado  
MODEL YEAR 2011 to Current

AAM PART #	O.E. PART #	DESCRIPTION	QTY
40058297		TUBE GASKET	1
	26036835	TUBE BOLT W/ WASHER & ADHESIVE	6
	15588371	RETURN SPRING	1
40051849		THRUST WASHER	1
7401873	15521873	ROLLER BEARING ASM	1
	26041516	ROLLER BEARING ASM I/O	1
40007173		ACTUATOR	1
40058706		DISCONNECT SLEEVE	1
40058285		IO SHAFT	1
26031703		SNAP RING	1
40007547		SHIFTER FORK	1
		WASHER	20

**74040363 9.25" FRONT CLAMSHELL - DIFFERENTIAL GEAR KIT**  
**9.25" FRONT SALISBURY**  
**9.50" REAR 14 BOLT -33 TOOTH**  
Sierra, Silverado, Savana, Express, Suburban, Yukon, Avalanche, H2, SSR, Trailblazer SS  
MODEL YEARS  
2007  
2010 to Current  
1981 to Current

AAM PART #	O.E. PART #	DESCRIPTION	QTY
		PINION GEAR	2
		PINION WASHER	2
		SIDE GEAR	2
		PINION SHAFT	1
		SIDE GEAR WASHER	2
		PINION SHAFT LOCK SCREW	1